

PorteTube Pro – a game-changing commercial vehicle accessory

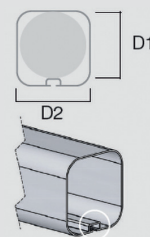
The first complete redesign of Rhino's hugely popular PipeTube since its launch in 2005, the PorteTube Pro is Europe's new leading system for securely and safely transporting copper pipe, plastic conduit and other lengthy materials. The new stylish design features an upgraded integral locking system and an added rubber seal to reduce water entering the tube. In addition, the PorteTube Pro retains all the features that made it the product of choice for professional van users, such as a market leading carry capacity, twin openings and full professional crash testing and safety accreditation.



20 mins
fitting time



INTERNAL DIMENSIONS



WEIGHTS AND DIMENSIONS

	L1	L2	L3	W1	H1	D1	D2	Weight	Max Load Limit
RP23 – 3 mètres	3260 mm	241 mm	3050 mm	186 mm	160 mm	125 mm	127 mm	13,85 kg	50 kg
RP24 – 4 mètres	4260 mm	241 mm	4050 mm	186 mm	160 mm	125 mm	127 mm	18,35 kg	50 kg
RP25 – 5 mètres	5260 mm	241 mm	5050 mm	186 mm	160 mm	125 mm	127 mm	22,85 kg	50 kg

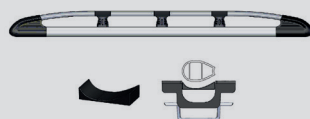
Please note: 4m and 5m PorteTubes will need to be mounted to more bars (i.e. 3 or 4). Please refer to the price application for full specification for each vehicle and fitting instructions prior to installation.

STANDARD FITTING BRACKET

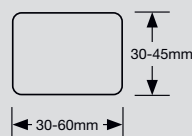
The PorteTube Pro comes with our standard fitting bracket that is compatible with all Rhino roof bars/racks and roof storage systems from other manufacturers*.

Every PorteTube Pro is supplied with a set of spacers that are slotted into the bracket in a specific position to suit our KammRack, KammBar Fleet and KammBar Pro, as well as AluminiumRack, KammBar and DeltaBar products respectively.

Rhino KammRack



Bar profile dimensions



*The PorteTube Pro can also be used on any other roof bar or roof rack system that fits within these dimensions.

Note: the system will also need to have the requisite number of cross bars.

Rhino KammBar Fleet/Pro



Standard fitting bracket

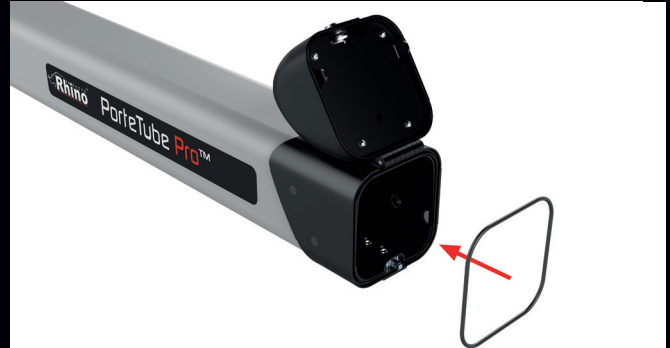
NEW FEATURES

INTEGRAL LOCKING SYSTEM



- The nose cone and connecting sleeve have been redesigned so that the lock is housed inside the tube.
- Where the old PipeTube lock sat below the tube, the new design makes the lock harder to get to and provides a more seamless look and feel.
- The new nose cone and sleeve design also incorporates a stronger adjoining hinge located on top of the system.

RUBBER O-RING SEAL



- Rubber O-ring located within the end of the connecting sleeve, which creates a tight seal when the nose cone is closed.
- The O-ring seal and PVC lining greatly reduce the oxidation process within the tube. Previously, water ingress could have led to a chemical reaction with the aluminium over time, leaving a residue in the tube.

BOLD NEW REDESIGN



Every element of the PorteTube Pro has been refined to provide stunning aesthetics:

- Striking new powder coated paint finish designed to work with all van colours
- Bold new label and product logo
- Rhino logo on end of the nose cone
- Stylised grooves in tube extrusion

EXISTING FEATURES

The PorteTube Pro retains all the benefits of the original PipeTube:

- Dual openings at either end
- Key lockable (two keys supplied)
- Universal standard fitting bracket for use on all Rhino van roof bars and racks
- Independently crash tested at Millbrook Proving Ground
- Aerodynamic nose cone design
- Large capacity: 66 x 15mm tubes
- Strong bulkhead within tube protects nose cone

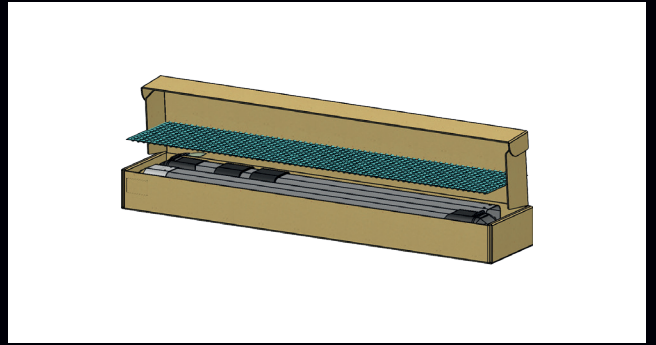
VARIANTS

The 3m PorteTube Pro comes in two 1.5m sections, whereas the 4m and 5m PorteTube Pro will come with either an additional one or two 1m sections. These can then be connected in between the two halves of the 3m system (RP23) using the same mechanical joining method.

RP23 - Assembled



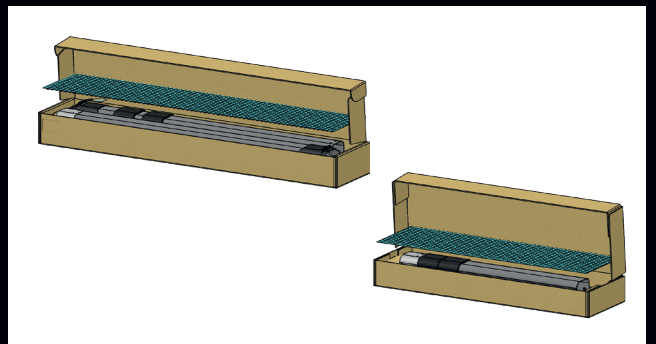
RP23 - Packaging



RP24 - Assembled



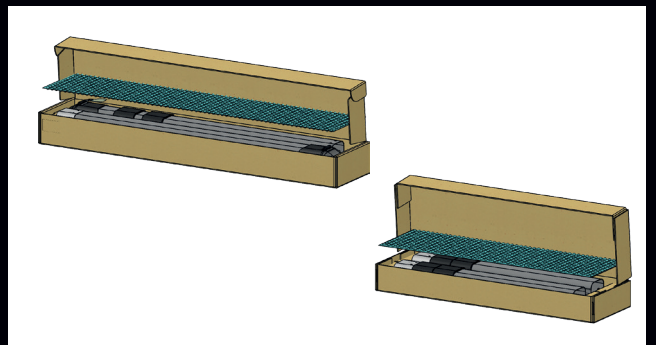
RP24 - Packaging



RP25 - Assembled



RP25 - Packaging

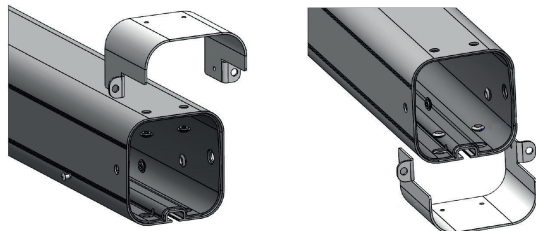


VARIANTS

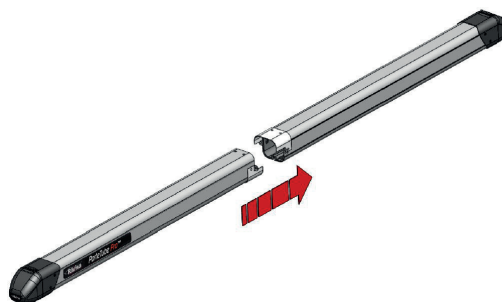
Code	Description	Length	Tube Sections
RP23	PorteTube Pro 3 m	3 m	2 x 1,5 m
RP24	PorteTube Pro 4 m	4 m	2 x 1,5 m, 1 x 1 m
RP25	PorteTube Pro 5 m	5 m	2 x 1,5 m, 2 x 1 m

PORTETUBE PRO ASSEMBLY

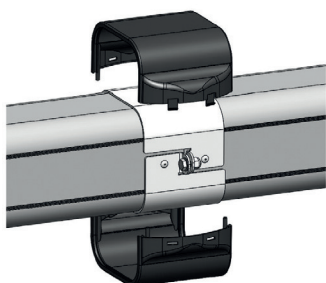
The 3m, 4m and 5m PorteTube Pro's main extrusion comes split into two sections to facilitate easy and cost-effective shipping for our customers. Our team of designers have created an innovative mechanical joining bracket to seamlessly connect two tube extrusions.



Each section of the tube extrusion in a 3m PorteTube Pro comes with part of the joining bracket **already connected**.



The two 1.5m halves of a 3m PorteTube Pro can then be joined together via a quick and easy assembly process.



The bracket is then covered in robust plastic composite casing that matches the nose cone and sleeve on either end.



The completed tube is then ready to be mounted to the vehicle.

MATERIAL

WHERE USED

ADVANTAGES

T6 Aluminium Alloy

- Main body

- Extremely durable, high tensile and yield strength
- Excellent weight to strength ratio
- Scratch resistant

Glass Filled Nylon

- 30% Glass filled nylon PA6

- Nose Cone
- End Cap Sleeve

- Tensile strength greater than standard nylon
- Increased stability when exposed to temperature changes

Steel

- DP600 Steel
- Stainless Steel 303
- Mild Steel

- Lock Hasp
- Hinge Pin
- Bulkhead

Fixings

- M8x35mm Square Neck Coach Screw
- 'T' Track Lock Plate M8
- M8 A2 form B Washer
- M8 A2 Nyloc Nut. Type P

Tools required

- 2x Spanner 13mm

- 1x Step/Ladder

- 1x Measuring tape

